



# Return to Work

## How COVID-19 Changed the Workplace

In April 2020, we surveyed 424 people currently employed in the new normal workforce to better understand today's expectations, wants, and needs as we transition back to the physical work environment. 100% surveyed said COVID-19 has accelerated changes in the workplace for the foreseeable future. **Here's what we found:**



**Continental  
Office**

# ONE

## Ongoing Disinfecting and Regular Cleaning is Paramount:

**96%** of those surveyed say increasing cleaning and disinfecting protocols on a regular basis is important.



**90%** of workers want to know what their company's cleaning process is.



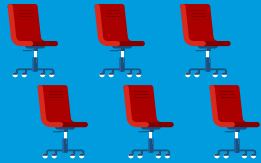
**95%** of today's workforce expects the workplace to be fully disinfected prior to returning and rate it important.



**88%** of C-level leaders will be changing cleaning and disinfecting policies as well as openly sharing that with their employees.



# TWO Reconfiguring Space for Physical Distancing is a Reality:



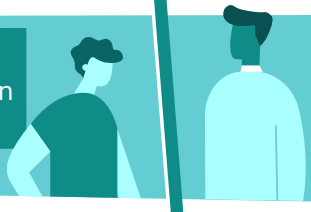
**73%** want assigned seating.

**76%** of people think we should eliminate shared seating.



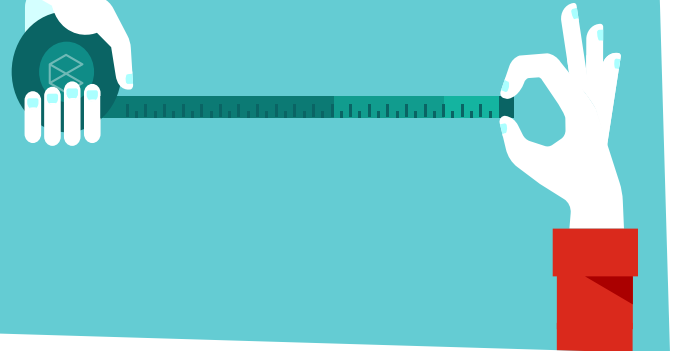
**89%** of workers think we need to limit the number of people in common areas, including conference rooms.

**71%** of people think adding dividers and partitions for open workstations is important.



**58%** of leaders are thinking differently about their current office square footage/real estate portfolios.

**58%** of C-level leaders are planning to redesign their workplace for social distancing and **33%** are undecided.



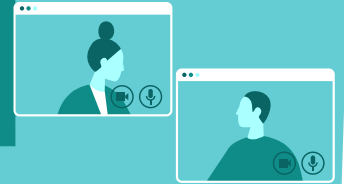
# Part-Time Remote/Work From Home is the New Normal:

**67%** of C-level leaders said COVID-19 has changed their perception of working from home and are planning to have all/some of their employees work from home from now on.

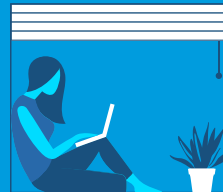


**50%** of C-level leaders say they will consider increased usage of flexible co-networking environments in their new workplace strategy. Another **33%** are undecided. Only **17%** are not shifting to this model.

**50%** of C-level leaders plan to increase technology for more virtual meeting and collaboration.



**74%** of people ages **25-44** said it's very important to be able to have a WFH option as compared to **53%** of people ages **45-64**.



# FOUR

## People Can Be Productive While Working From Home:

**30%** of people feel more productive while working from home, and **42%** feel they maintain the same level of productivity.



**64%** said eliminating their commute gave them more time.

**53%** credit a flexible schedule.



**59%** cited less distractions.

**34%** said technology like video conferencing helped them.



**73%** said they would be more comfortable working from home if they had a **better home office set up** like an ergonomic chair, a sit-to-stand desk, and monitor arms.



# FIVE

## People Still Want a Physical Workplace Environment:

**94%** of people still want to have the physical workplace as an option to work within.



Only **12%** of people still want to work in the office 100% of the time.

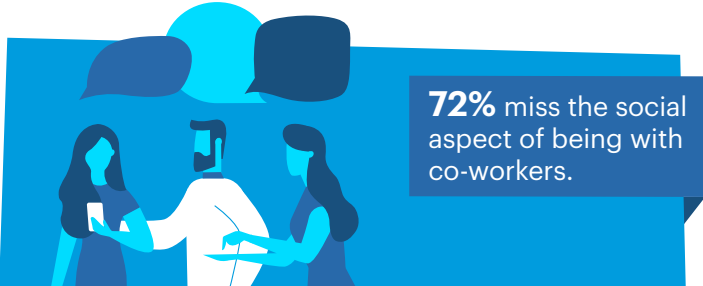
**63%** want to work at the office part of the time and remote the rest of the time.

**19%** want to work at a mix of the office, a co-working space, and from home.

# SIX

## Without a Physical Workplace People Miss:

**25%** miss the ability to use meeting rooms and other private spaces.



**72%** miss the social aspect of being with co-workers.



**49%** miss visiting with customers.



**46%** feel less connected to their team when 100% remote.



Contact us today to see how we can help you return to your physical workplace. We can help with cleaning/disinfecting, physical distancing, safety signage, work from home products, and PPE.

To learn more, please visit [continentaloffice.com/request-a-consultation](https://continentaloffice.com/request-a-consultation)